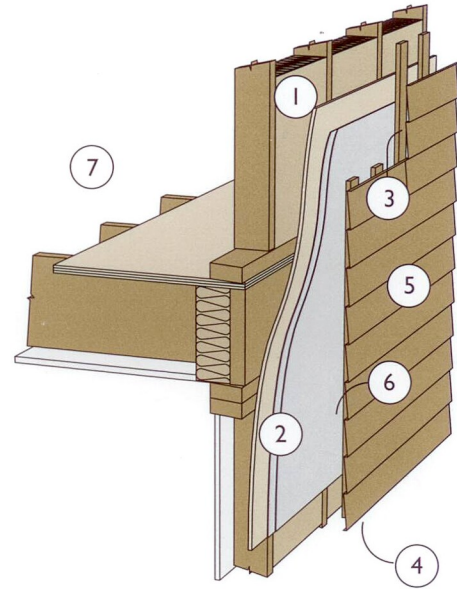


TYPICAL PARTY WALL AND INTERMEDIATE FLOOR SYSTEM FOR APARTMENTS

- ① One layer of 1/2" gypsum wallboard or 1/2" plywood overlaid with a second layer of fire rated 5/8" gypsum wall board
- ② Party wall assembly (one hour fire separation) incorporating two separate 2x4 kiln-dried finger-jointed wood stud walls
- ③ 3 1/2" acoustical batt insulation
- ④ 1" air separation between 2x4 stud walls
- ⑤ One layer of 5/8" fire rated gypsum wall board
- ⑥ Acoustical sealant, installed around the perimeter of the bottom wall plate
- ⑦ 1 1/2" concrete floor topping
- ⑧ 5/8" plywood floor sheathing
- ⑨ 3 1/2" acoustical batt insulation with necessary supports
- ⑩ 2x2 cross bracing or solid bridging
- ⑪ Kiln dried 2x10 spruce floor joists
- ⑫ 3/8" acoustical isolation channel, installed between fire rated 5/8" gypsum wall board and wood floor joist
- ⑬ Party floor assembly - one hour fire separation



TYPICAL EXTERIOR RAIN SCREEN WALL DETAIL

- ① 1/2" standard spruce plywood sheathing
- ② Tyvek commercial wrap or two layers 30 minute building paper
- ③ 3/8" x 2" pressure treated vertical plywood strapping or strips 'Enkadrain' drainage mat
- ④ Nylon insect screen
- ⑤ Durable vinyl siding or Hardi-Panel
- ⑥ Airspace between siding and building paper
- ⑦ Reviewed and certified by Building Envelope Engineer